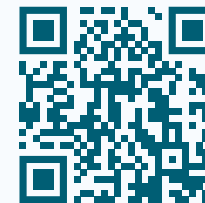




More information
about Artec Ray II
Visit our knowledge base
(kennisbank)



Artec RAY II

Multicharger



English

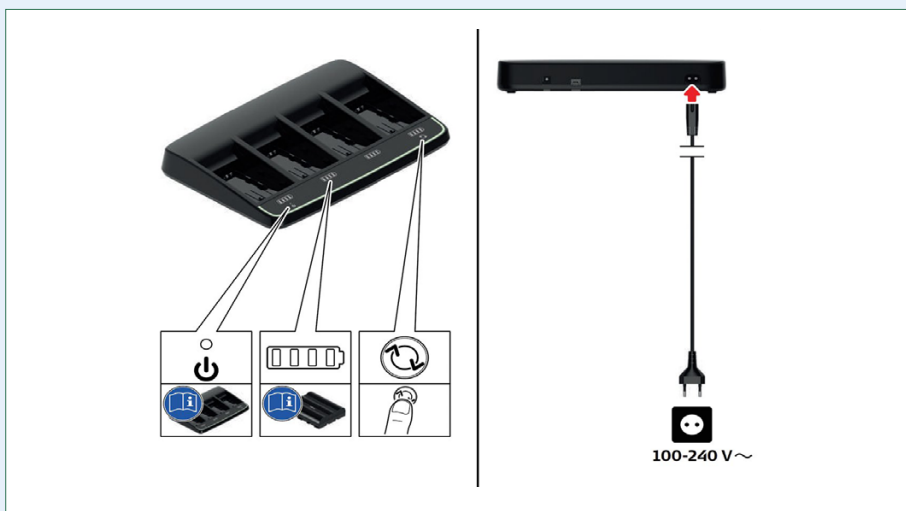
Version 2025.05A

Introduction

In this document you will find the method to use the multicharger for charging the batteries for your Ray II scanner.



Charger Components

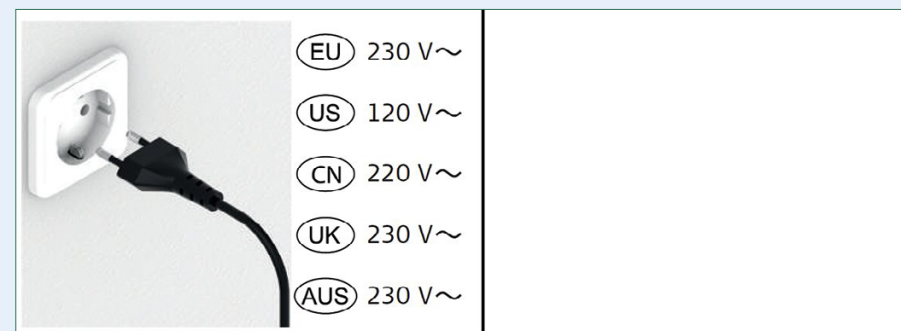


Description of the system

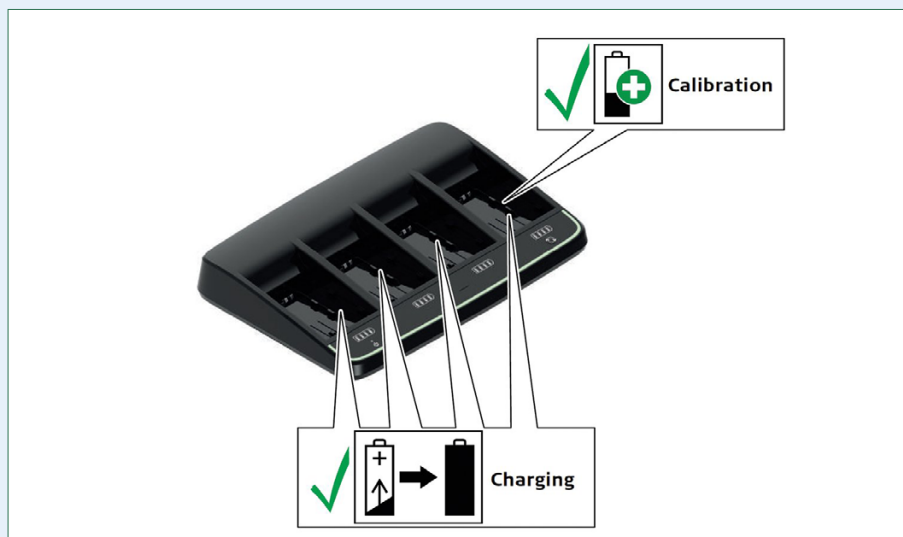
Supported batteries



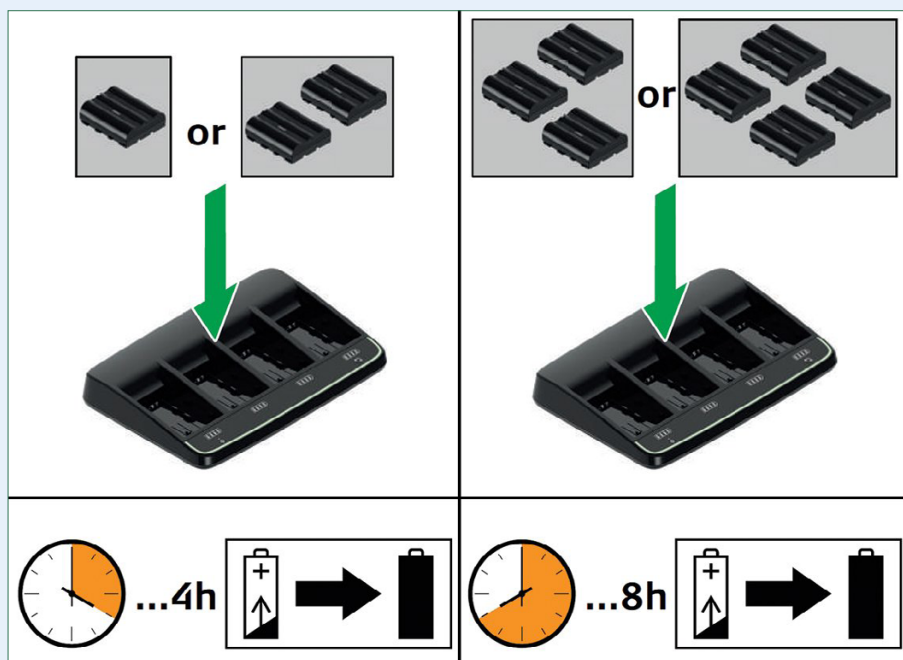
Power Supply



Charging function/Calibration function

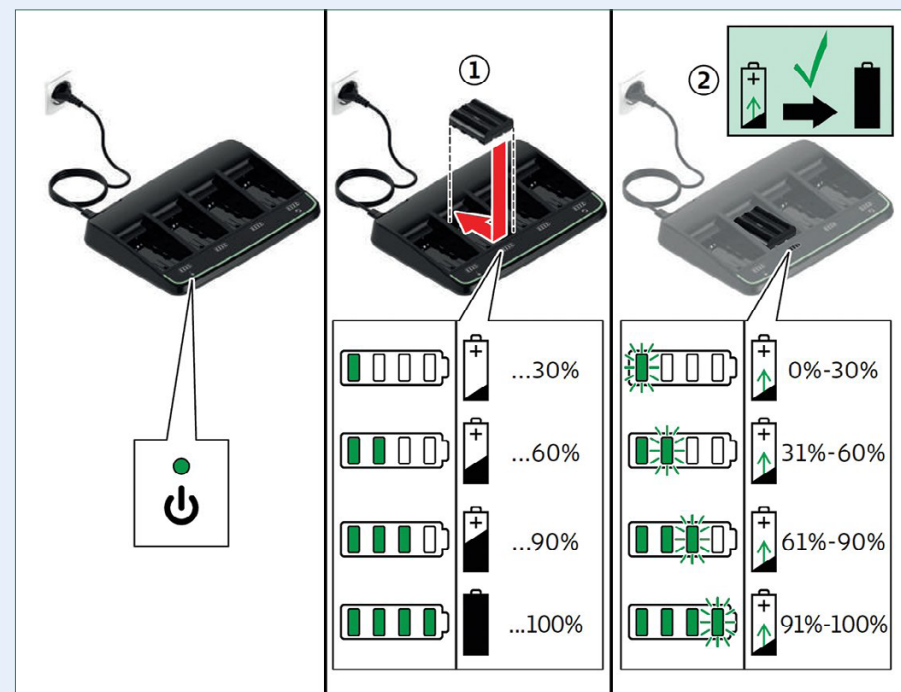


Charging times

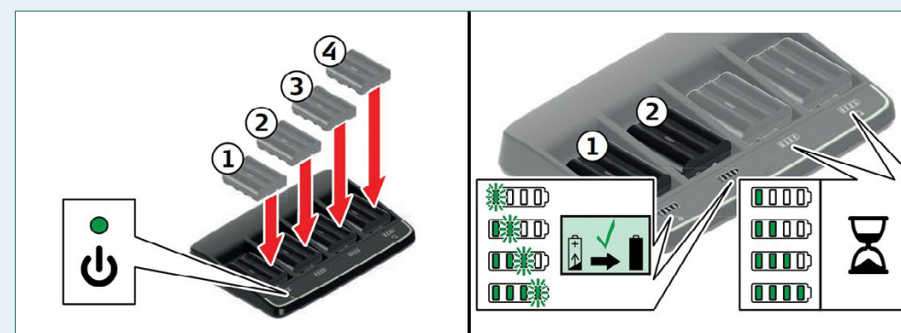


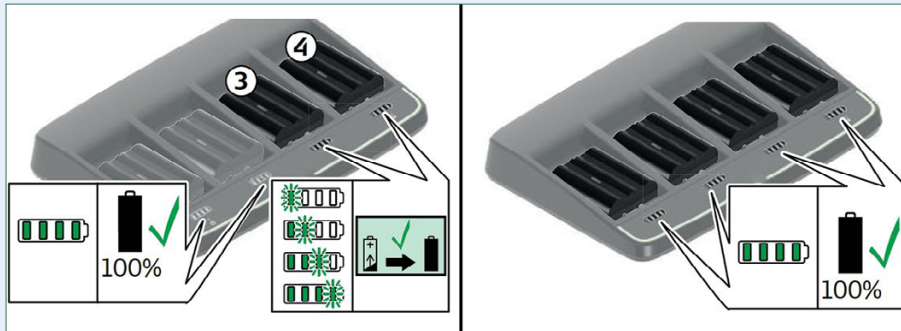
Charging Function

Inserting and charging the batteries

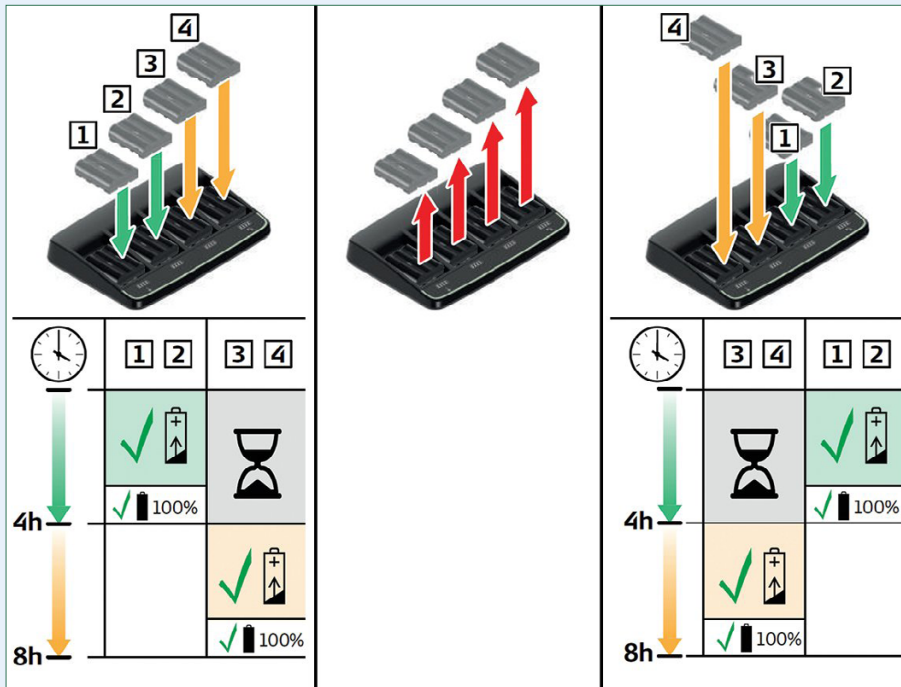


Charging priority





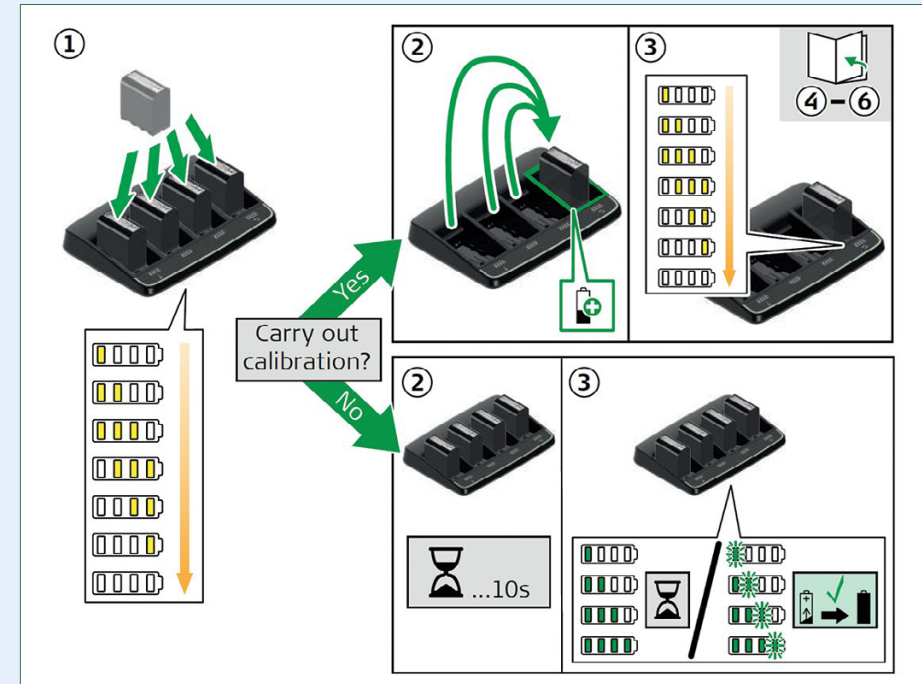
Change of charging priority

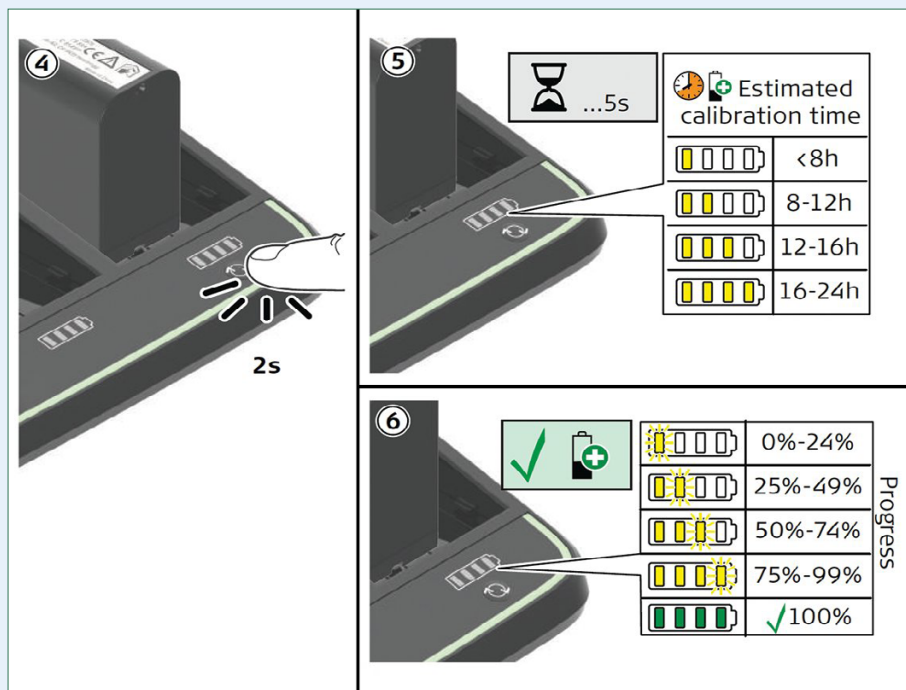


Calibration Function

Option 1

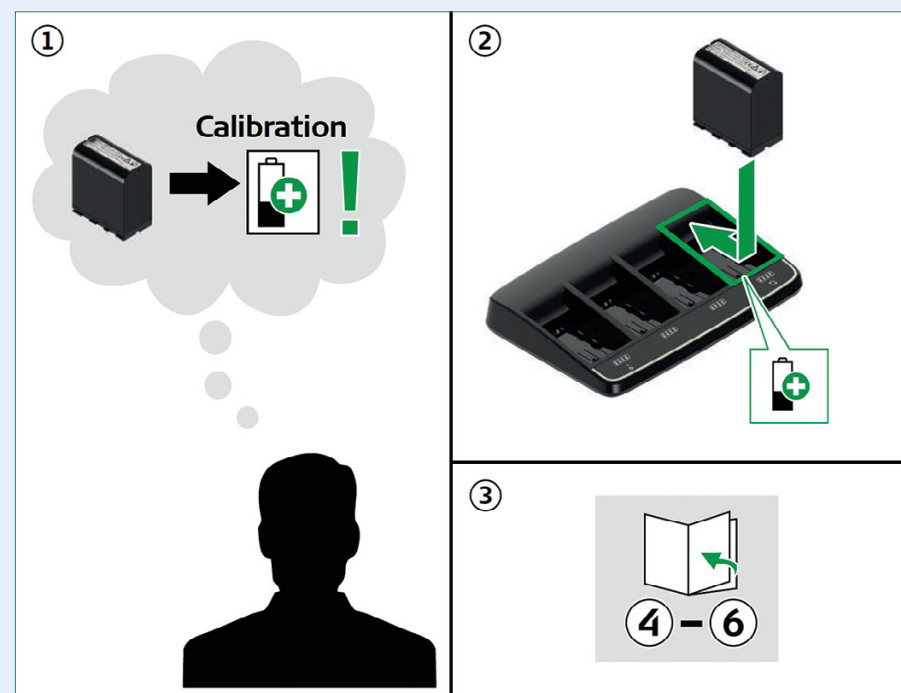
Charger recommends a calibration





Option 2

Request a calibration



Calibration Function

④

2s

⑤

...5s

Estimated calibration time

	<8h
	8-12h
	12-16h
	16-24h

⑥

⑥

Progress

	0%-24%
	25%-49%
	50%-74%
	75%-99%
	✓ 100%

Error Indication

0°C 50°C

OR:

Low Input Voltage!

0°C 50°C

Troubleshooting

Warning icon

Warning icon

Have fun scanning with
ARTEC RAY II



4C Creative Cad Cam Consultants

4C Creative CAD CAM Consultants is a company specialized in 3D technologies and is located in Emmen, Drenthe. 4C is your partner for delivering professional hardware and software for 3D scanning, reverse engineering, AR & VR and quality control.

Contact

✉ info@4cccc.nl

☎ +31 (0)591 - 377 442

For more information, FAQ, updates,
documents and videos about Artec Ray II
go to 4cccc.nl/kennisbank/artec-ray-2



4cccc.nl

Your partner for buying
an Artec 3D scanner in the Benelux